

測試報告

號碼(No.) : CT/2016/61125A

日期(Date) : 2016/07/05

頁數(Page) : 1 of 3

Test Report

LUDAVI, INC.

13484 HOLIDAY DRIVE, SARATOGA, CA 95070, U. S. A.



以下測試樣品係由申請廠商所提供及確認 (The following sample(s) was/were submitted and identified by/on behalf of the applicant as) :

送樣廠商(Sample Submitted By) : 路達威國際有限公司 (LUDAVI INTERNATIONAL CORP.)
樣品名稱(Sample Description) : LUDAVI WATER BOTTLE SILICONE(LUDAVI 鑽石水瓶矽膠)
樣品材質(Sample Material) : 矽膠 (SILICONE)
原產國(Country of Origin) : 台灣 (TAIWAN)
收件日期(Sample Receiving Date) : 2016/06/28
測試期間(Testing Period) : 2016/06/28 TO 2016/07/05

=====
測試需求(Test Requested) : 依據客戶指定, 參考2010日本厚生省要求-日本厚生省告示第370號及其修正案第三部分D節的遵守情況的規定, 日本食品衛生法(第233號)的第1款第7條和第10條進行測試, 測試項目請參閱測試結果表格. / As specified by client, selected parts of the submitted sample(s) for compliance with 2010 Japan Ministry of Health, Labour and Welfare Requirement-Japan Ministry of Health and Welfare Notice No. 370 and its amendments Part III Section D for the compliance of the provisions of paragraph 1 of Article 7 and Article 10 of Japan Food Sanitation Law (Law No. 233) to conduct test. Please refer to result table for testing item(s).

測試結果(Test Results) : 請見下一頁 (Please sheetler to next pages).


Singh Hsiao / Supervisor
Signed for and on behalf of
SGS TAIWAN LTD.



This document is issued by the Company subject to its General Conditions of Service printed overleaf, available on request or accessible at <http://www.sgs.com/en/Terms-and-Conditions.aspx> and, for electronic format documents, subject to Terms and Conditions for Electronic Documents at <http://www.sgs.com/en/Terms-and-Conditions/Terms-e-Documents.aspx>. Attention is drawn to the limitation of liability, indemnification and jurisdiction issues defined therein. Any holder of this document is advised that information contained hereon reflects the Company's findings at the time of its intervention only and within the limits of Client's instructions, if any. The Company's sole responsibility is to its Client and this document does not exonerate parties to a transaction from exercising all their rights and obligations under the transaction documents. This document cannot be reproduced except in full, without prior written approval of the Company. Any unauthorized alteration, forgery or falsification of the content or appearance of this document is unlawful and offenders may be prosecuted to the fullest extent of the law. Unless otherwise stated the results shown in this test report refer only to the sample(s) tested.

測試報告 Test Report

號碼(No.) : CT/2016/61125A

日期(Date) : 2016/07/05

頁數(Page) : 2 of 3

LUDAVI, INC.

13484 HOLIDAY DRIVE, SARATOGA, CA 95070, U. S. A.



測試結果(Test Results)

測試部位(PART NAME)No. 1 : 半透明矽膠 (TRANSLUCENT SILICONE)

通過(PASS)

測試項目 (Test Items)	單位 (Unit)	測試方法 (Method)	方法偵測 極限值 (MDL)	結果 (Result)	限值 (Limit)
				No. 1	
鉛 / Lead (Pb)	mg/kg	參考日本厚生省告示第370號的第三節及其修正案(2011), 以ICP-AES分析. / With reference to Section III of Japan Ministry of Health and Welfare Notice No. 370 and its amendments (2011). Analysis was performed by ICP-AES.	1	n. d.	100
鎘 / Cadmium (Cd)	mg/kg		0.1	n. d.	100

備註(Note) :

- 0.1wt% = 1000ppm ; mg/kg = ppm ; mg/L = ppm ; $\mu\text{g/ml}$ = ppm
- MDL = Method Detection Limit (方法偵測極限值)
- n. d. = Not Detected (未檢出)

測試報告
Test Report

號碼(No.) : CT/2016/61125A

日期(Date) : 2016/07/05

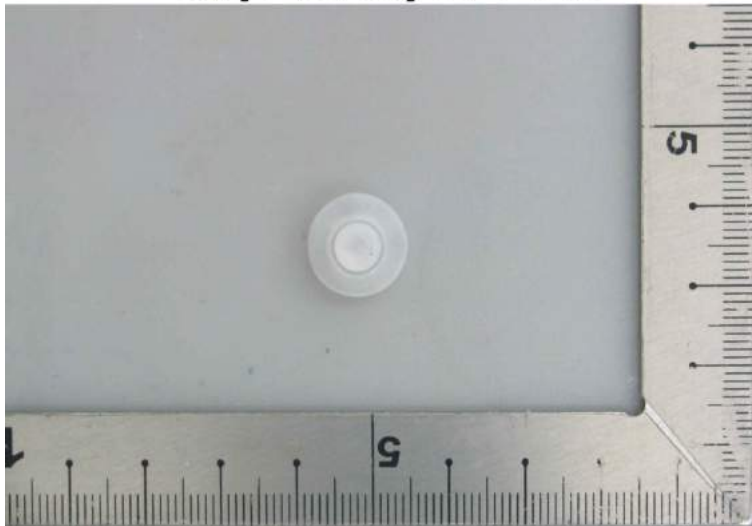
頁數(Page) : 3 of 3

LUDAVI, INC.

13484 HOLIDAY DRIVE, SARATOGA, CA 95070, U. S. A.



* 照片中如有箭頭標示，則表示為實際檢測之樣品/部位。 *
(The tested sample / part is marked by an arrow if it's shown on the photo.)

CT/2016/61125**** 報告結尾 (End of Report) ****

This document is issued by the Company subject to its General Conditions of Service printed overleaf, available on request or accessible at <http://www.sgs.com/en/Terms-and-Conditions.aspx> and, for electronic format documents, subject to Terms and Conditions for Electronic Documents at <http://www.sgs.com/en/Terms-and-Conditions/Terms-e-Document.aspx>. Attention is drawn to the limitation of liability, indemnification and jurisdiction issues defined therein. Any holder of this document is advised that information contained hereon reflects the Company's findings at the time of its intervention only and within the limits of Client's instructions, if any. The Company's sole responsibility is to its Client and this document does not exonerate parties to a transaction from exercising all their rights and obligations under the transaction documents. This document cannot be reproduced except in full, without prior written approval of the Company. Any unauthorized alteration, forgery or falsification of the content or appearance of this document is unlawful and offenders may be prosecuted to the fullest extent of the law. Unless otherwise stated the results shown in this test report refer only to the sample(s) tested.